

Caribbean Ocean HUB Node / CMA Update at the MMSDIWG

Jhonny Humberto Garces Ortega

Information Service Laboratory Chief - INVEMAR

Jefatura.labsis@invemar.org.co



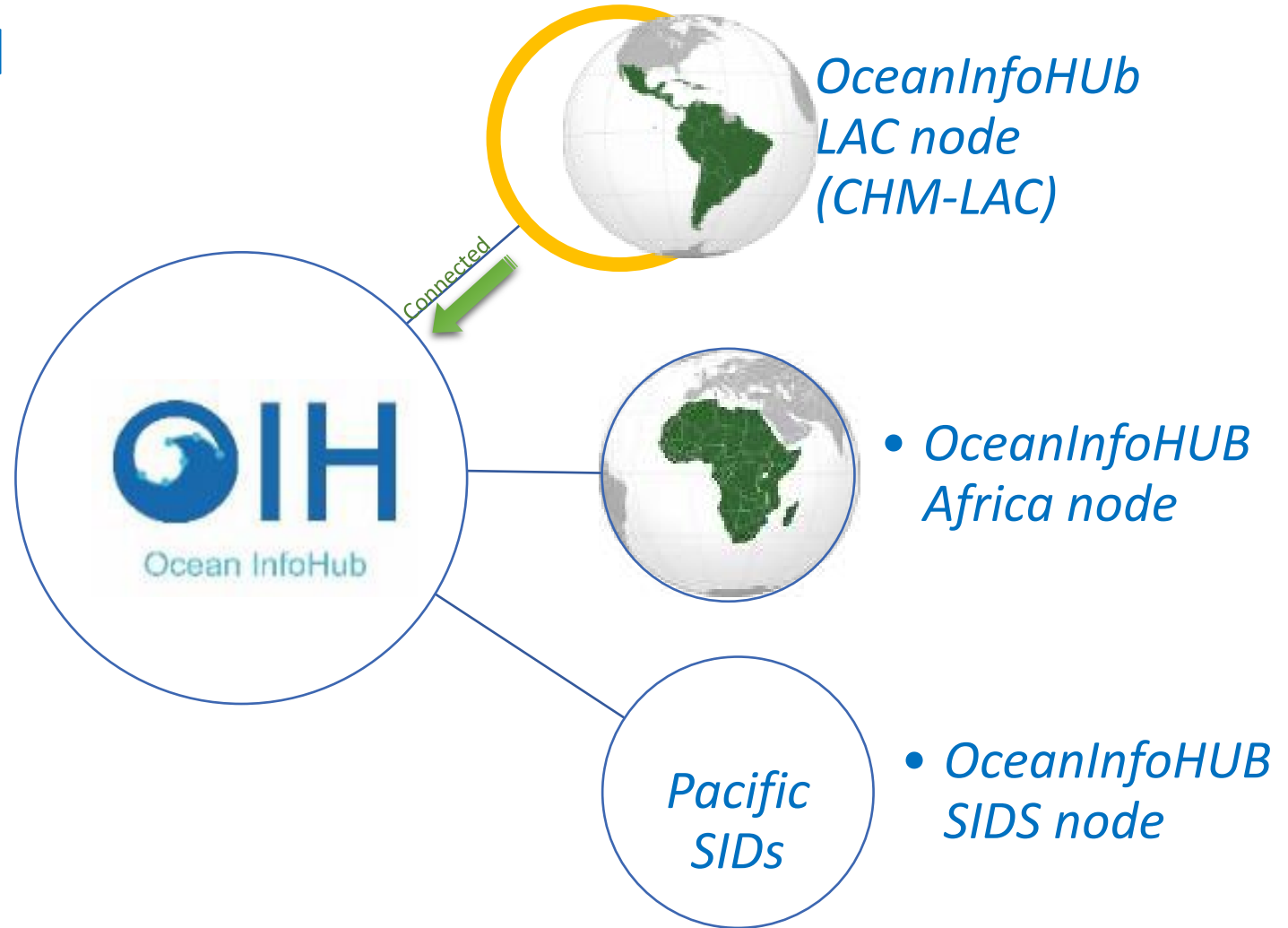
Caribbean Marine Atlas

- Information Repository: Documental, Maps, Geographic Information
- (1) to support regional-level Integrated Ocean Governance (204)
- (2) to support Integrated Coastal Zone Management (ICZM) in IOCARIBE Member States (354)
- Thematic marine indicators dashboard

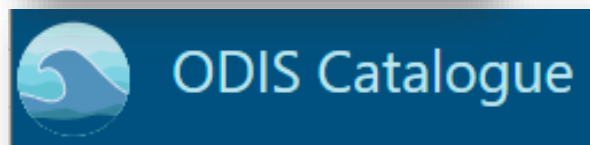
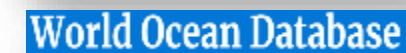
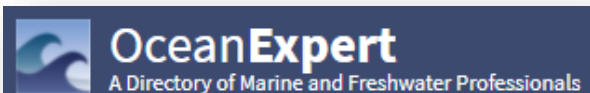
The screenshot shows the homepage of the Caribbean Marine Atlas. At the top, there is a navigation bar with the GMA logo, menu items for 'Datos', 'Mapas', and 'Acerca de', and a search bar with the text 'Buscar'. Below the navigation bar is a map of the Caribbean region with several location markers. A large yellow banner contains the text 'Buscar datos.' and a search input field with a magnifying glass icon and the text 'Buscar'. Below the banner, there are four main sections: '354 Capas' (Layers) with a diamond icon and a button 'Agregar Capas'; '31 Mapas' (Maps) with a location pin icon and a button 'Crear mapas'; '285 Documentos' (Documents) with a document icon and a button 'Agregar documentos'; and '76 Usuarios' (Users) with a person icon and a button 'Ver usuarios'. At the bottom, there is a section titled 'Descubra los conjuntos de datos disponibles.' (Discover the available data sets.) with a grid of 20 icons representing different data categories, each with a small number next to it.

<https://www.caribbeanmarineatlas.net/home/>

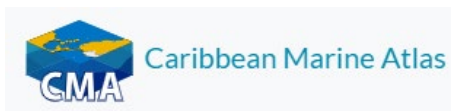
The Ocean InfoHub (OIH) Project aims to improve access to global ocean information, data, and knowledge products for management and sustainable development.



The OIH work with global IOC-associated online resources – including:



Projects / Institutions
National directories
Governmental institutions
Universities



DATA

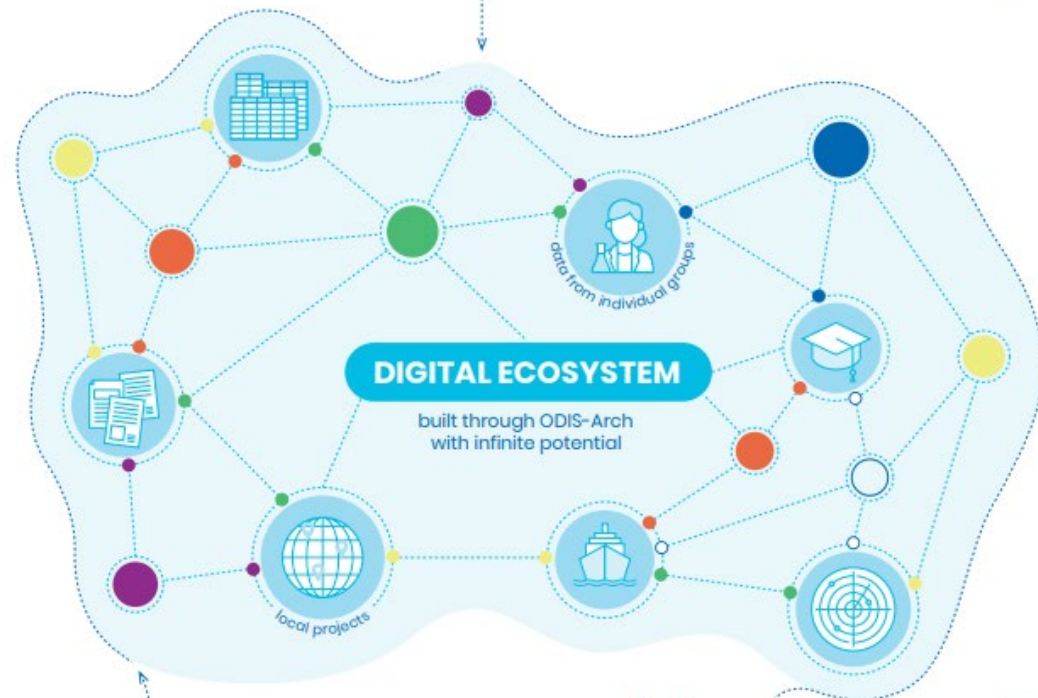
Existing Ocean data catalogues & services (like Ocean Biodiversity Information System, OceanExpert, AquaDocs, Ocean Best Practices System) and emerging ones

PATTERNS

Specifications to describe different data types

- Experts and institutions/organisations
- Documents
- Training opportunities
- Spatial data and maps
- Projects
- Research vessels

indexed through ODIS-Arch specifications



SEARCH
through InfoHub platform and other search engines

CONNECT
marine and coastal Ocean data centres across the globe

Cooperate and exchange knowledge to build a truly shared Ocean

Data from different sources can be entered through the formats:

- CSW
- OAI
- XLSX
- JSON

In some cases the information is extracted through WEB SCRAPING.

Currently there is information from 9 sources.

The screenshot shows the CHM LAC website dashboard. At the top left is the CHM LAC logo. At the top right are navigation links for Home, Statistics, and Log in, along with flags for Spain and the USA. The main header area contains the title 'Clearing-House Mechanism LAC' and a search bar. Below the header, there are seven data cards arranged in two rows. Each card displays an icon, a category name, a count, and a brief description. The bottom of the page features a footer with copyright information and logos for Flanders State of the Art, UNESCO, IODE, and the Intergovernmental Oceanographic Commission.

Category	Count	Description
Experts	1171	Information on people
Documents	19821	Mainly grey literature, manuals and guidelines
Training	452	Training and education opportunities
Laboratories	0	Information on laboratories
Institutions	268	Information on institutions
Geospatial information	948	Maps and atlases
Vessels	84	Information of Vessels

Seven data types from at least 9 countries of the region – 22,708 information resources.

<https://portete.invemar.org.co/chm#/>

Beneficiaries of the Project will include:

- Scientists (academic and private sector)
- Government agencies
- Policy makers
- IOC global and regional programmes
- IODE National Oceanographic Data Centers (NODCs)
- IODE Associate Data Units (ADUs)
- IODE Associate Information Units (AIUs)
- UN agencies
- International Governmental Organizations (IGOs)
- Non-Governmental Organizations (NGOs)
- Industrial and commercial enterprises

Jhonny Humberto Garces Ortega

Marine and Coastal Research Institute INVEMAR - OIH LAC NODE

jefatura.labsis@invemar.org.co

<http://portete.invemar.org.co/chm#/>

